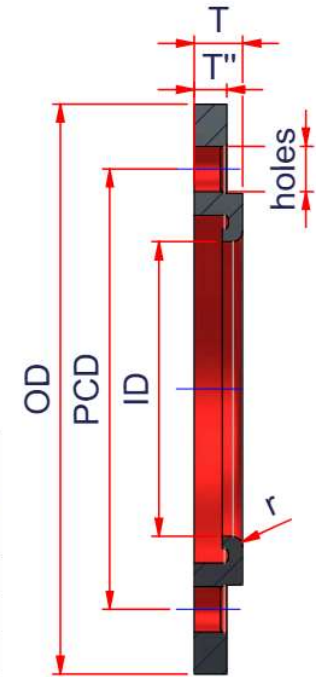


Marking: NUPI - "ND" - IPS - SDR



CODE	ANSI 150# HOLE PATTERN	ND (IPS PE)	SDR	OD	ID	PCD	T''	T	r	holes	N° holes
00FLAVN027	2"	2"	7	6	2.46	4.75	0.5	0.75	0.26	0.75	4
00FLAVN037	3"	3"	7	7.5	3.6	6	0.63	0.94	0.26	0.75	4
00FLAVN047	4"	4"	7	9	4.6	7.5	0.63	0.94	0.26	0.75	8
00FLAVN0411	4"	4"	11	9	4.75	7.5	0.38	0.58	0.26	0.75	8
00FLAVN057	5"	5"	7	11	5.69	8.5	0.63	0.94	0.39	0.875	8
00FLAVN067	6"	6"	7	11	6.75	9.5	0.60	1	0.39	0.875	8
00FLAVN0611	6"	6"	11	11	6.88	9.5	0.38	0.63	0.39	0.875	8
00FLAVN087	8"	8"	7	13.5	8.75	11.75	0.70	1.13	0.39	0.875	8
00FLAVN0811	8"	8"	11	13.5	8.88	11.75	0.50	0.88	0.39	0.875	8
00FLAVN107	10"	10"	7	16	10.92	14.25	0.78	1.19	0.39	1	12
00FLAVN1011	10"	10"	11	16	11	14.25	0.56	1	0.39	1	12
00FLAVN127	12"	12"	7	19	12.92	17	0.90	1.4	0.39	1	12
00FLAVN1211	12"	12"	11	19	13.13	17	0.65	1.25	0.39	1	12
00FLAVN147	14"	14"	7	21	14.18	18.75	1.05	1.63	0.5	1.125	12
00FLAVN1411	14"	14"	11	21	14.38	18.75	0.81	1.38	0.5	1.125	12

EloFIT



ITEM: **FLAVN**

DESC: IPS EPOXY COATED DUCTILE IRON
BACKING RING ANSI/ASA 150



DRAWING No:

EL10308

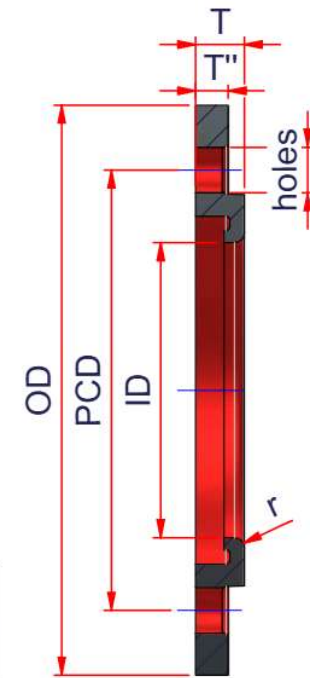
SHEET OF REV.

1 2 -5

www.nupiamericas.com - info@nupiamericas.com

All dimensions have to be considered in inches with 5% tolerance if not otherwise mentioned excluding values as per standard ASTM D2513/D3261 and/or AWWA C901/C906

Marking: NUPI - "ND" - IPS - SDR



CODE	ANSI 150# HOLE PATTERN	ND (IPS PE)	SDR	OD	ID	PCD	T''	T	r	holes	N° holes
00FLAVN167	16"	16"	7	23.5	16.19	21.25	1.10	1.8	0.5	1.125	16
00FLAVN1611	16"	16"	11	23.5	16.38	21.25	0.91	1.67	0.5	1.125	16
00FLAVN187	18"	18"	7	25	18.2	22.75	1.10	1.8	0.5	1.25	16
00FLAVN1811	18"	18"	11	25	18.38	22.75	0.75	1.69	0.5	1.25	16
00FLAVN207	20"	20"	7	27.5	20.38	25	1.20	2.13	0.5	1.25	20
00FLAVN209	20"	20"	9	27.5	20.38	25	0.92	2.06	0.5	1.25	20
00FLAVN2011	20"	20"	11	27.5	20.38	25	1	1.81	0.5	1.25	20
00FLAVN227	22"	22"	7	29.5	22.38	27.25	1.52	2.3	0.5	1.375	20
00FLAVN2211	22"	22"	11	29.5	22.38	27.5	1.13	2	0.5	1.375	20
00FLAVN249/11	24"	24"	9/11	32	24.38	29.5	1.13	2.13	0.5	1.375	20
00FLAVN309/11	30"	30"	9/11	38.75	30.38	36	1.30	2.68	0.5	1.375	28

EloFIT



ITEM: **FLAVN**

C:\Vault_Temp\Disegn\Ishede
Tecniche\00_Inches\Elofit\Accessories\EL10308.dwg

DESC: IPS EPOXY COATED DUCTILE IRON
BACKING RING ANSI/ASA 150



DRAWING No:

EL10308

SHEET OF REV.

2 2 -5

www.nupiamericas.com - info@nupiamericas.com

All dimensions have to be considered in inches with 5% tolerance if not otherwise mentioned excluding values as per standard ASTM D2513/D3261 and/or AWWA C901/C906