

90° ELBOW

(BUTT) IPS & CTS

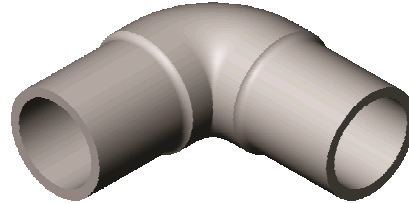
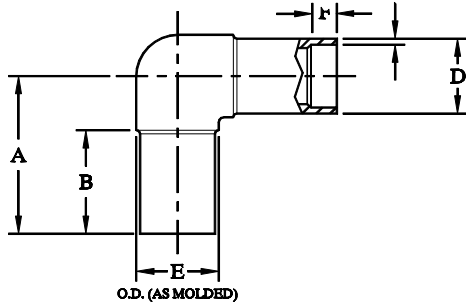
BUTT FUSION FITTINGS



GEORG FISCHER
PIPING SYSTEMS

GEORG FISCHER CENTRAL PLASTICS

39605 Independence, Shawnee, OK, 74804 | 1.800.654.3872 | www.gfcp.com



NOMINAL SIZE	DIMENSION A	DIMENSION B	DIMENSION C	DIAMETER D	DIAMETER E (AS MOLDED)	DIMENSION F
3/4" IPS (SDR 9.3)	4.00	2.63	.113 +.060	1.050 ±.008	1.19	N/A
	101.6 mm	66.8 mm	2.87 mm	26.67 mm	30.2 mm	
1" CTS (.101 WALL)	3.69	2.25	.101 MIN.	1.125 ±.013	1.27	N/A
	93.7 mm	57.2 mm	2.57 mm	28.58 mm	32.3 mm	
1" IPS (SDR 9.3)	4.00	2.63	.141 +.028	1.315 ±.010	1.47	N/A
	101.6 mm	66.8 mm	3.58 mm	33.40 mm	37.3 mm	
1 1/4" IPS (SDR 9.3)	4.00	2.63	.178 +.035	1.660 ±.010	1.84	N/A
	101.6 mm	66.8 mm	4.52 mm	42.16 mm	46.7 mm	
1 1/2" IPS (SDR 9.3)	4.00	2.63	.204 +.041	1.900 ±.010	2.09	N/A
	101.6 mm	66.8 mm	5.18 mm	48.26 mm	53.1 mm	
2" IPS (SDR 9.3)	4.50	2.81	.255 +.051	2.375 ±.010	2.63	1.00
	114.3 mm	71.4 mm	6.48 mm	60.33 mm	66.8 mm	25.4 mm
2" IPS (SDR 11)	4.70	2.54	.216 +.043	2.375 ±.010	2.66	NA
	119.3 mm	64.6 mm	5.49 mm	60.33 mm	67.6 mm	
3" IPS (SDR 9.3)	5.13	3.00	.377 +.075	3.500 ±.012	3.88	1.00
	130.3 mm	76.2 mm	9.58 mm	88.90 mm	98.6 mm	25.4 mm
3" IPS (SDR 11)	5.13	3.00	.318 +.064	3.500 ±.012	3.88	1.00
	130.3 mm	76.2 mm	8.08 mm	88.90 mm	98.6 mm	25.4 mm
4" IPS (SDR 9.3)	5.75	3.00	.484 +.097	4.500 ±.015	4.75	1.00
	146.1 mm	76.2 mm	12.29 mm	114.30 mm	120.7 mm	25.4 mm
4"IPS (SDR 11)	5.75	3.00	.409 +.081	4.500 ±.015	4.75	1.00
	146.1 mm	76.2 mm	10.39 mm	114.30 mm	120.7 mm	25.4 mm
6" IPS (SDR 11)	9.00	4.38	.603 +.121	6.625 ±.018	6.81	1.40
	228.6 mm	111.3 mm	15.32 mm	168.28 mm	173.0 mm	35.6 mm
8" IPS (SDR 9)	12.00	6.00	.958 +.115	8.625 ±.025	9.00	1.37
	304.8 mm	152.4 mm	24.33 mm	219.08 mm	228.6 mm	34.8 mm
8" IPS (SDR 11)	12.00	6.00	.785 +.157	8.625 ±.025	9.00	1.37
	304.8 mm	152.4 mm	19.94 mm	219.08 mm	228.6 mm	34.8 mm
10" IPS (SDR 11)	13.25	6.00	.978 +.186	10.750 ±.027	11.25	2.98
	336.6 mm	152.4 mm	24.84 mm	273.05 mm	285.8 mm	75.7 mm
12" IPS (SDR 11)	15.88	7.50	1.160 +.232	12.750 ±.036	13.35	3.73
	403.4 mm	190.5 mm	29.46 mm	323.85 mm	339.1 mm	94.7 mm