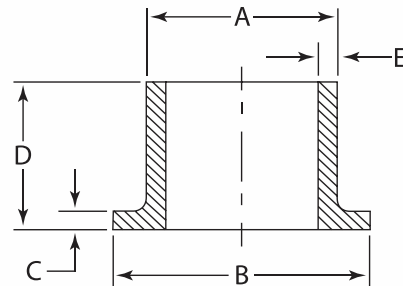


## Butt Flange Adapters

Elongated



Molded of  
PE100/4710/3408  
Black  
CODE 112

### SDR 17 (Standard Dimension Ratio) 125 PSI (Working Pressure at 73.4 °F)

Nominal Diameter (inch)	A (inch) OD	B (inch)	C (inch)	D (inch)	E (inch) Wall	Weight (lbs.)	Product Code	Box Quantities
2" IPS	2.375	3.94	0.55	6.1	0.14	0.37	112 0002 17	12
3" IPS	3.5	5	0.67	6.1	0.206	0.71	112 0003 17	6
4" IPS	4.5	6.61	0.79	6.1	0.264	1.27	112 0004 17	4
6" IPS	6.625	8.5	1.02	8.07	0.39	3.02	112 0006 17	4
8" IPS	8.625	10.63	1.02	10.67	0.508	6.02	112 0008 17	2
10" IPS	10.75	12.99	1.18	11.5	0.633	10.06	112 0010 17	14
12" IPS	12.75	15.75	1.38	10.83	0.75	14.17	112 0012 17	14

### SDR 11 (Standard Dimension Ratio) 200 PSI (Working Pressure at 73.4 °F)

Nominal Diameter (inch)	A (inch) OD	B (inch)	C (inch)	D (inch)	E (inch) Wall	Weight (lbs.)	Product Code	Box Quantities
¾" IPS	1.05	1.85	0.39	4.02	0.095	0.07	112 0075 11	40
1" IPS	1.315	2.36	0.39	4.02	0.119	0.11	112 0001 11	24
1¼" IPS	1.66	2.8	0.39	4.02	0.151	0.16	112 0125 11	30
1½" IPS	1.9	3.15	0.39	4.02	0.173	0.12	112 0150 11	25
2" IPS	2.375	3.94	0.55	6.1	0.216	0.48	112 0002 11	12
3" IPS	3.5	5	0.67	6.1	0.318	0.93	112 0003 11	6
4" IPS	4.5	6.61	0.79	6.1	0.409	1.66	112 0004 11	4
6" IPS	6.625	8.5	1.02	8.07	0.603	4.07	112 0006 11	4
8" IPS	8.625	10.63	1.26	10.67	0.785	8.73	112 0008 11	2
10" IPS	10.75	12.99	1.38	11.5	0.978	14.11	112 0010 11	14
12" IPS	12.75	15.75	1.5	10.83	1.16	19.88	112 0012 11	14